



JAYAWANT SHIKSHAN PRASARAK MANDAL's

# KAUTILYA INSTITUTE OF MANAGEMENT & RESEARCH

(Approved by AICTE, New Delhi, Govt. of Maharashtra & Affiliated to Savitribai Phule Pune University)

**NAAC ACCREDITED WITH "A" GRADE**

Gat. No. 720 (1&2), Wagholi, Pune-Nagar Road, Pune-412 207.

PH: 020- 67335100

E-mail: [director@jspmkimr.edu.in](mailto:director@jspmkimr.edu.in)

Website: [www.jspmkimr.edu.in](http://www.jspmkimr.edu.in)



**Prof. Dr. T. J. Sawant**

**B.E. PGDM, PH.D**

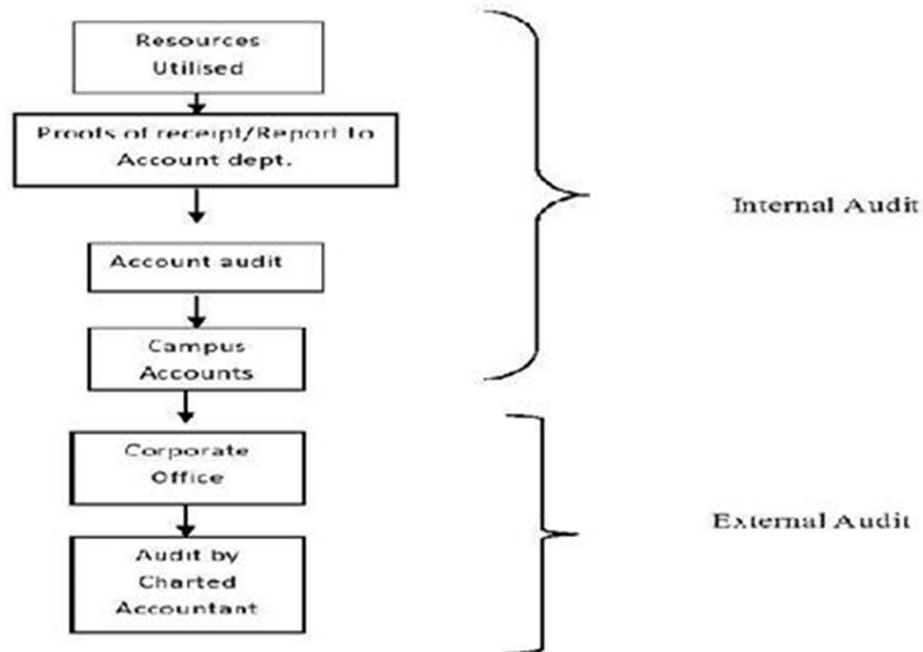
**FOUNDER SECRETARY**

**Dr.H.D.Patil**

**B.E. , MBA, PH.D**

**DIRECTOR**

## 6.4.1 Process of Internal and External Financial Audit



  
**DIRECTOR**  
 JSPM's Kautilya Institute of  
 Management & Research  
 Wagholi, Pune - 412 207

